

Villages of *Van Buren County*

2025-2026 VILLAGES GUIDE

800.868.7822
VILLAGESOFVANBUREN.COM

Villages of Van Buren
809 First Street, PO Box 9
Keosauqua, IA 52565
800.868.7822 / 319.293.7111
info@villagesofvanburen.com
villagesofvanburen.com



Welcome to the Van Buren County Welcome Center & McCoy Historical Museum, your gateway to the Villages! Take a break from the hustle and give yourself time to relax and recharge. Step into an 1870 Folk Style home filled with rich history, fascinating antiques, and treasured memorabilia. Our friendly staff is here to help you uncover the hidden gems of all 11 Villages: Bentonsport, Birmingham, Bonaparte, Cantril, Douds, Farmington, Keosauqua, Milton, Mt. Sterling, Selma, and Stockport.



*Experience a peaceful escape from the modern world
Slow down, soak it in, and make lasting memories in the
Villages of Van Buren!*

TABLE OF CONTENTS

Shopping.....	2-5	Community Services.....	28
Dining & Drinks.....	6-8	Convenience Stores.....	28
Leisure & Fun.....	8-10	Financial & Insurance...28-29	
Villages Orb Project.....	8	Healthcare.....	29
Trails.....	9-10	Home & Construction.....	30
Historical Sites.....	10-13	Memorial Services.....	30
Local Organizations.....	14	Real Estate.....	30
The Villages.....	15-16,19-20	Service Stations.....	31
County Map.....	17-18	Utility Providers.....	31
Lodging.....	20-24	Special Events.....	32
Campgrounds.....	24-26	Business Index.....	33
Meeting Facilities.....	27	Our Neighbors.....	34
Agri Businesses.....	27-28		

Connect with us:



Printing by:
Sutherland Printing, Inc.
525 N Front Street, Montezuma
319.750.1766
sutherlandprinting.com



Sutherland Printing

Located in Iowa, our team is devoted to providing the highest quality print from your marketing pieces to direct mail. Specializing in catalogs, books, brochures and newsletters, mailing domestic and foreign. We offer in-house design services to assist with your projects. Contact Diane Sayre at 319.750.1766 or diane@sutherlandprinting.com to schedule an appointment!

SHOPPING

CANTRIL

Dutchman's Store

14999 Hwy 2, Cantril
319.397.2322

dutchmansstore.com

Step into a world of delightful surprises!

Explore our expanded selection of bulk foods,

candies, fresh produce, deli items, and grocery essentials. Discover departments featuring fabrics, crafts, clothing, footwear, sporting goods, kitchenware, and unique gifts. Enjoy weekly and seasonal specials, plus an array of vibrant spring plants, hanging baskets, vegetables, and fall favorites. With friendly service, low prices, and nostalgic charm, this is a shopping journey like no other! Open Monday-Friday 8am-6pm; Saturday 8am-5pm. Closed Sun.



MILTON

Milton Creamery

202 East Hwy 2, Milton
641.656.4094

miltoncreamery.com

Taste the *award-winning cheeses*

that have captivated cheese lovers nationwide! We craft each batch using the finest local Amish and Mennonite dairy farmers milk, hand packed in traditional hoops, and aged



to perfection. Watch our cheesemakers in action through the viewing window, offering a glimpse into the process.

Stop by and sample our fresh curds and artisanal cheeses for you to savor.

Visit us Monday-Saturday, 9am-4pm.

Closed Sunday. For inquiries, email: cheese@miltoncreamery.com.

BENTONSPORT

Addie May Fudge

21964 Hawk Drive, Bentonsport
319.592.3579 / 641.233.7793

Indulge in the irresistible charm of Addie May Fudge at the Historic Greef General Store! Savor our 18 delectable flavors of fresh butter and cream fudge, available daily. Quench your thirst with our beverages, and on weekends treat yourself to our delightful sandwiches from 11:30am-1:30pm. Catering and shipping is also available. Like us on Facebook.



Historic Greef General Store

21964 Hawk Drive, Bentonsport
319.592.3579

What was once a busy 1840's general store that provided everyday essentials to a bustling river community is now an antique store. You'll find local handmade crafts, a wide variety of antiques and Addie May Fudge. We also have several Indian and local artifacts on display. Open Wednesday-Sunday 10am-4pm. Nov-April hours: Friday-Sunday 10am-4pm. Closed Monday and Tuesday. Like us on Facebook.



SHOPPING

BENTONSPORT

Iron & Lace

21952 Hawk Drive, Bentonsport

319.592.3222

ironandlaceiowa.com

Unique store featuring Queen Anne's Lace pottery, raku, hand forged artistic ironwork, handmade jewelry, over 200 handwoven rugs & placemats. Demonstrations by chance or appointment. A must-see shop! Open Friday and Saturday, 10am-5pm. Outside of these hours, give us a call!



Sweet Maple Mercantile

21960 Hawk Drive, Bentonsport

607.205.5024

A modern-day general store in a historic setting. Gifts and goods for everyone. We take care to provide USA made products with many of them made in Iowa! Quality, artistic, and fun gifts and foods. We support Veterans. Check us out on Facebook! Open in April: Saturday, 10am-4pm; May-September: Thursday-Saturday, 10am-4:30pm; October-December, Saturday, 10am-4:30pm. Other times by appointment.



BONAPARTE

Holmes Leather Crafting

605 First Street, Bonaparte

319.217.3677

Your local outlet for leather goods, repair, and knife sharpening. We feature jackets, vests, hats, and leather repair. Custom leatherwork including belts, earrings, holsters, sheaths, and more. We also sell accessories for motorcycles and riders. Come see our Damascus knives and line of unique toys and wood models. There truly is something for everyone! Stuart Holmes, Master Craftsman.

Open Tuesday-Saturday, 9am-5pm. Monday by appointment.



Simply Irresistible

622 First Street, Bonaparte

319.592.3311

Step into this charming, old-timey drug store filled with vintage treasures on display and for sale, Boyds Bears collectibles, and handmade items. Enjoy hot coffee, cold drinks, baked goods, and Native Iowa wines, or pick up local honey for a sweet treat. Relax in the sit-down dining area. Public restrooms available. Open Monday-Thursday, 8am-Noon; Friday-Saturday, 8am-4pm. Closed Sunday. Come explore the nostalgia!



FARMINGTON

Gypsy and Gems

103 Elm Street, Farmington

319.470.6150

Take a journey through history and explore a treasure trove of unique finds! Discover exquisite, handmade Native American jewelry, premium cowhide rugs, and genuine leather purses. Treat your four-legged friends to stylish collars and bandanas. Enhance your well-being with crystals, stones, and copper. Embrace the adventure and find your spirit animal! Proudly featuring Hopi, Zuni, and Navajo heritage with a western flair. Open Thursday-Friday: 10am-4pm, Saturday: 8am-4pm. Follow us on Facebook!



SHOPPING

FARMINGTON

Holly's Flippin Out

201 Elm Street, Farmington

319.850.8928

hollysflippinout.com

Get ready to flip out over unique treasures! From beautifully painted one-of-a-kind furniture and stylish home decor, to trendy fashion, Dixie Belle paint, and locally-made gems, there's always something new to discover. Want to get crafty? Join a fun DIY class! With ever-changing inventory, every visit is a fresh experience. Shop small, support local, and find something fabulous! Open Saturday and Sunday, 9am-5pm, or by appointment.



The Lilac- Antique and Vintage Shoppe

301 N Second Street, Farmington

319.371.7864

facebook.com/thelilacshoppe

Nestled along the banks of the Des Moines River, featuring an extensive collection of antiques and vintage treasures, from charming primitive crockery to stylish mid-century glassware and everything in between.

With one of the finest selections of antiques in southeast Iowa, we offer something for every budget, taste, and collector. We also carry a variety of handmade seasonal pieces that could add a special touch to your home. Open Saturdays 10am-4pm, or by appointment.



Riverfront Flowers N' More

607 South Front Street, Farmington

319.878.4258

riverfrontflowersnmore.com

Nestled along the Des Moines River is a three-generation, family-owned flower shop, greenhouse, and garden center dedicated to bringing beauty to every occasion. Since 2005, we've been hand-delivering premium floral arrangements, potted plants, and gift baskets for birthdays, anniversaries, memorials, and those "just because" moments. We are dedicated to your satisfaction and your needs will be treated with the attention they deserve. Browse our fresh-cut flower arrangements, seasonal annuals, perennials, bushes, planters, hanging baskets, fresh cut Christmas trees, and more. Our full service greenhouse features hand-painted Mexican pottery and metal art. There is something for everyone! Open 7 days a week. Monday-Saturday, 9am-8pm; Sunday, Noon-8pm. Greenhouse seasonal hours. While you're here grab lunch or a sweet treat!



LEBANON

Yoder's Indian Creek Furniture LLC

22769 Route V64, Milton (just south of Lebanon)

319.538.7332 (voicemail)

Bring us your dreams and we will custom build to fit your needs! Visit our store and you'll find a great selection of quality hardwood furniture including tables, chairs, hutches, bedroom sets, rockers, gliders, and recliners. Also, maintenance-free outdoor furniture, high-quality mattress sets, rustic cedar log furniture, pie safes, bird feeders, wind chimes, gazebos and so much more. 4 miles north of Cantril or 3/4 miles south of Lebanon on Route V64. Open Monday-Friday, 8am-5pm and Saturday, 9am-4pm. Closed Sundays. Also closed Jan 1, April 18, May 29, Nov 27, Dec 25-26.

319.293.7111 / 800.868.7822

SHOPPING

LEBANON

Broken Wheel Blooms / Broken Wheel Harness

14531 Route J40, Milton (West of Lebanon)

641.242.2773 (voicemail)

Discover the beauty of Broken Wheel Blooms, located just west of Lebanon. Explore fields of fresh-cut flowers and choose your favorites to craft a custom bouquet. Take home a vibrant hanging basket or get inspired by their thoughtfully arranged floral examples.

While visiting, stop by Broken Wheel Harness for quality harnesses, halters, dog collars, and Elite Nutrition Products. This Amish family invites you to enjoy their farm and experience true natural charm! Open Monday-Saturday, 8am-5pm.

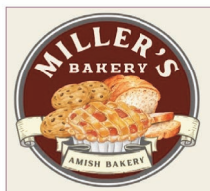


Miller's Bakery

17453 205th Street, Keosauqua (NE of Lebanon)

319.201.8862 (voicemail)

Discover the authentic charm at the county's only Amish bakery and indulge in an assortment of baked goods and homemade noodles. Savor our daily fresh fried pies and make your weekends sweeter with donuts and cream-filled long johns on Fridays and Saturdays. In the fall and winter months, treat yourself to homemade candies of all kinds. Open Thursday-Saturday, 8am-5pm.



KEOSAUQUA

Jeanette's Floral and Decor

205 Van Buren Street, Keosauqua

319.293.3161

Florals, gifts, home decor, and more!

Specialize in weddings and funeral florals. Blooming and green plants, tropicals, silks, great gifts, home decor,

jewelry, The Captured Harvest soaps and lotions, and Anchored Northwest candles. Offering traditional and contemporary floral designs ideal for birthdays, anniversaries, get well, new baby, sympathy, holidays, or just because. Stop in and browse my home decor and gift items. Locally owned by Jeanette Goehring.

Open Monday-Wednesday and Friday, 9am-5pm; Thursday and Saturday, 9am-Noon.



VILLAGE FRIENDS

Hinterland Dairy Farmstead Cheese

2149 Franklin Road, Donnellson

319.470.3919

hinterlanddairy.com

Sitting in the beautiful, rolling hills of SE Iowa. For the Krogmeier family, dairying is not just an occupation; it's a way of life. Cheese is made right here

on the dairy farm, using only farm fresh milk from our cows.

Come visit our viewing area and on-farm cheese shop featuring our cheeses, ice cream, and other locally made products. Open spring through Christmas. Friday, 12-6pm; Saturday, 10am-4pm; Sunday, Noon-4pm or by appointment.



DINING & DRINKS

BONAPARTE

Bonaparte Retreat

713 First Street, Bonaparte

319.592.3339

[facebook.com/](https://facebook.com/officialbonaparteretreat)

[officialbonaparteretreat](https://facebook.com/officialbonaparteretreat)

Step back in time and savor a delicious meal in this charming restaurant nestled in a beautifully restored 1878 grist mill. Known for its hearty portions and welcoming atmosphere, this local favorite offers a dining experience like no other. Whether you're stopping in for a satisfying lunch or making dinner a special occasion, you'll love the rustic charm and rich history of the regionally famous Retreat, a southeastern Iowa tradition! Lunch served daily 11am-1pm. Dinner served at 5pm. Closed Sunday evening.



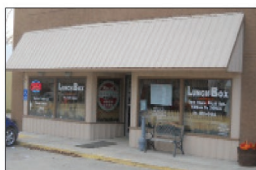
DOUDS

Lunch Box Cafe

14191 Route V64, Douds

641.936.4444

Open Thursday, Friday, and Saturday from 11am-7pm serving delicious home cooked meals! Everyone can't seem to get enough of our Bigfoot Tenderloin, Texas Tators, Bug-Z Burger, Chicken Club and salads. Catfish is served every Friday night 5-7pm and Homemade Tacos on Saturday. Stop in for some of the best cookin' around and enjoy browsing our extensive collections of memorabilia.



FARMINGTON

Bridge Cafe & Supper Club

101 Olive Street, Farmington

319.878.4000

Established in 1932, still locally owned, and serving quality food at reasonable prices. Known for our homemade pies, delicious entrees, and specialty nights with live entertainment. Enjoy our popular weekend breakfast and Sunday buffets. Walk into our cafe side and you're immediately one of the locals! Catering available. Free wifi. Open Monday-Tuesday, 8am-8pm; Wednesday-Thursday, 8am-2pm; Friday-Saturday, 8am-8pm; Sunday, 8am-3pm. (*Hours may vary*)



Ice Cream & Take Out! (Riverfront Flowers N' More)

607 South Front Street, Farmington

319.878.3313

[facebook.com/](https://facebook.com/RiverfrontFlowersNMore)

[RiverfrontFlowersNMore](https://facebook.com/RiverfrontFlowersNMore)

Where sweet treats meet riverside charm! Enjoy soft-serve ice cream, floats, and slushies, or savor a tasty lunch or dinner with paninis, wraps, salads, nachos, wings, and more! Don't miss fun appetizers like fried green beans or sweet potato fries with marshmallow dipping sauce. Open daily from 12-8pm, this cozy shack is the perfect spot to grab a bite, relax by the river and treat yourself year round. Call ahead for to go orders. While there, be sure to check out the flower and gift shop! Follow on Facebook for specials.



DINING & DRINKS

KEOSAUQUA

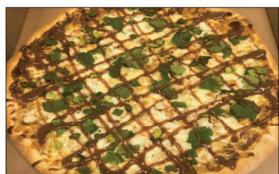
Riverbend Pizza & Steakhouse

603 First Street, Keosauqua
319.293.9900

Looking for a delicious meal in a warm, family-friendly atmosphere? Stop by for mouthwatering specialty pizzas, sizzling steaks, and fresh-breaded tenderloins! Local favorites include crispy onion rings, fried pickle spears, juicy chicken wings, and Iowa Soft Shell Tacos. Enjoy our all-you-can-eat salad bar and a variety of daily specials!

Open Monday, 11am-8pm; Tuesday, 4-8pm; Wednesday-Thursday, 11am-8pm;

Friday-Saturday, 11am-9pm; Sunday, 11am-7pm (*during summer*). Hours may vary seasonally, so call ahead or check Facebook for the latest updates. Whether you're craving a casual dinner or a feast with friends, we've got something for everyone!



Misty's Malt Shop

106 Main Street, Keosauqua
319.293.3815

Located just off the bridge on Hwy 1 in Keosauqua. Start your day with our hearty breakfasts, served Monday-Saturday at 7am. Enjoy homemade tenderloins, sandwiches, wraps, salads and more for lunch and supper. Don't miss our world-famous black raspberry ice cream, a perfect treat to cool yourself on a sunny day! Relish our cozy indoor dining area or bask in the sun on our outdoor seating, conveniently next to our walk-up ordering window. Open 7 days a week, with extended hours until 9pm in the summer.



Vet's Club Bar & Grill

202 Van Buren Street, Keosauqua
319.293.9153

As the Vet's Club, formerly the VFW, we continue to honor all veterans. Open to the public year round. If we're open, our kitchen is open! Serving up food fresh off the grill with fried chicken every Friday night, 5-7pm. Hours: Tuesday-Wednesday, 2pm-close; Thursday-Saturday, 10am-close. Closed Sunday and Monday.



Great Day Cafe

202 Main Street, Keosauqua
319.293.3581

facebook.com/greatdaycafekeosauqua

It's always a great day at the Great Day Cafe! Enjoy specialty coffee, homemade desserts, breakfast favorites, and lunch options like paninis and wraps. A family run cafe open Tuesday-Saturday, 7am-2pm. Private meeting room available.

DINING & DRINKS

MT. STERLING

A.J's Saloon

101 Elm Street, Mt. Sterling
319.494.5582

The place for the best giant tenderloin in Southeast Iowa! Nestled in scenic Mt. Sterling overlooking the Fox River Wildlife Management area. This hidden gem has a delicious menu and fully stocked bar. Play some pool, put some tunes on the jukebox, and enjoy a great meal in this relaxed atmosphere! Open six days a week. Tuesday-Sunday, 11am-10pm. Closed Monday.



LEISURE & FUN

Bloom and Bark Glass Blowing - Keosauqua

18517 County Road J40, Keosauqua
319.293.6168

bloomandbark.com

Glass Blowing Studio, Local Artisan Market and Natural Farm. Find the artist within! No experience needed. Glass blowing classes and demonstrations available. Shop our Local Artisan Market filled with local art and fine crafts. A little something for everyone. Join us on the farm where, along with all the glass blowing fun, you can watch the chickens and pet the dogs and cats. Check out the clay ovens built to make artisan bread. Open by appointment or chance. We live where we work - don't be shy, stop on by! Find us on Facebook [@bloomandbarkfarm](https://www.facebook.com/bloomandbarkfarm).



The glass artist behind the VILLAGES ORB PROJECT!

VILLAGES ORB PROJECT

An interactive art installation in which hand blown glass orbs are hidden along trails in the Villages of Van Buren. Explore villagesofvanburen.com/orbs/ and follow along on Facebook!



Rent A Horse - Farmington

1116 Hwy 2, Farmington
319.878.3596

westerccamps.weebly.com

Saddle up for an unforgettable adventure! Explore the scenic trails of Shimek State Forest on a guided 2 1/2-hour trail ride on one of our horses or mules. For just \$60 per person, riders (ages 6 & up, 250 lbs. & under) can experience the beauty of Iowa's great outdoors from the best seat in the house. Open every day! Call for reservations.



LEISURE & FUN

Villages Folk School - Keosauqua

809 First Street, Keosauqua

319.288.0047

villagesfolkschool.com

13 teaching artists and several visiting instructors offering classes countywide year-round in traditional and contemporary arts. Glass blowing, pottery, painting, letterpress, foraging, blacksmithing, rug weaving, soap making & more!



Van Buren County Trails

Bentonsport River Trail - 1/2 mile hike.

Bentonsport Nature Trail - 2 mile hike w/interpretive signage.

Indian Lake Park - (Farmington) 2.2 mile gravel, bike & pedestrian. Benches and picnic area.

Keosauqua Loop Trail - 2+ miles with trail head at Roberts Memorial Building on Hwy 1 North. Bike & pedestrian trail with asphalt/gravel surfaces. Map available.

Lacey-Keosauqua State Park - Extensive trail system (about 13 miles), rough terrain. Map available.

Lake Sugema - 2 mile dirt hike. Trailhead at southern boat ramp.

Lindsay Wilderness - (Bonaparte) 200 acres of public hunting, hiking trails with 2 stocked ponds.

Milton Trail Park - 1.5 mile gravel, bike & pedestrian. Benches, covered bridges & shelter. Trailheads Hwy 2 and Old Main St.

Morris Park - (Stockport) 1.1 mile hike.

Shimek State Forest - (Farmington) Extensive trail system with rough terrain. Hike, snowmobile, bike & equestrian trails.

Waubonsie Park Trail - (Cantril) 1 mile gravel, bike & pedestrian trail, covered bridges & picnic areas.

Van Buren County Water Trail - 41 miles on the Des Moines River. Boats, canoes, kayaks. Eight access points between Selma and Farmington. Brochure available, includes map.

Van Buren County Conservation Areas

vbcountyconservation.com

Des Moines River Access: (8 acres) 2 miles S of Bonaparte (south side of the river). Boat ramp, public hunting & fishing.

Lindsay Wilderness: (200 acres) NE of Bonaparte. Public hunting & hiking.

Reno Timber: (60 acres) NE of Bonaparte. Public hunting & hiking.

White Timber: (10 acres) 2.8 miles from Bonaparte (Hwy 2 East) & 100 yards south of Hwy 2. Public hunting.

Bentonsport Timber: (60 acres) NE of Bentonsport. Public hunting & hiking.

Des Moines River Access-Douds: Boat access, shelter & 2 campsites with 30/50amp hookups.

Shidepoke Access: West of Selma. Boat access to Des Moines River. Fishing.

Austin Park: 2 miles NE of Pittsburg on Des Moines River. Boat access, primitive camping & fishing. Toilet & shelter.

LEISURE & FUN

Van Buren County Conservation Areas

vbcountyconservation.com

Chequest Wildlife Area: (38 acres) 2 miles west of Pittsburg. Public hunting & hiking.

Daugherty Timber: (83 acres) 1 mile west of Hwy 1 on 240th Street. Public hunting & hiking.

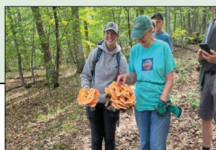
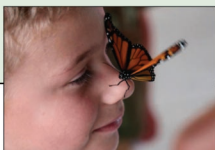
Schultz Conservation Area: (2 acres) 2 miles west of Kilbourn (south side). Public hunting, fishing & hiking.

CONSERVATION NATURALIST PROGRAM

The Van Buren County Conservation Naturalist program works to foster a deeper connection between the community and the natural world, developing and providing access to public spaces and recreational activities that promote health, conservation, and community well-being.

Get outside and engage with your natural environment!

For additional details and events, go to
vbcountyconservation.com\naturalist-programs.html
and be sure to follow on Facebook!



HISTORICAL SITES

Historic Presbyterian Church - Bentonsport

21827 Ridge Road, Bentonsport

319.592.3222

bentonsportheritage.org

Dedicated in 1855, this church remains a house of worship. The church is open for non-denominational church services June-September on Sundays at 9am. Available for rental.



Aunty Green Hotel Museum - Bonaparte

210 Washington Street, Bonaparte

319.371.5020

Built by John Green c. 1844. It was the first brick home in Bonaparte. Around 1855 it was converted into a hotel operated by Mary Green. Guest baggage was unloaded from a wagon onto the second story porch. Open by appointment.



Douds Depot

14168 Walnut Street, Douds

319.293.3209 / 641.936.4485

The Douds Depot was built in 1907, replacing an earlier structure, and remained in service until 1972. It is presently a mining and railroad museum. Open by appointment.



HISTORICAL SITES

Mt. Moriah Church - Douds

14889 120th Street, Douds

319.293.3209 / 641.936.4485

The Mt. Moriah Methodist Church was built in 1892. It served a congregation until 1958. In 1997, the church was restored. The church is located two miles north of Douds. It is the only surviving country church in the county in near original condition located on the original site of a church/cemetery combination. Open during special events or by appointment.



Oak Grove Community - Douds

15818 Iowa Oak Grove Avenue, Douds

319.293.3066

The Oak Grove School held its first classes in 1872. A new addition was built in 1909 and the building served students until 1959. The adjacent Oak Grove Church was built in 1895 and is one of the last remaining church/schoolhouse sites in the state. Open for special events or by appointment.



Valley School No. 3 - Douds

14779 Ferris Street, Douds

319.293.3209 / 641.936.4485

This old country school was built in 1928 and served as a school until 1966. It remained as a community building and polling place until 1990. In 1995, the building was moved six miles into Memorial Park in Leando. The school has been restored and is complete with period furnishings. Open by appointment.



Pearson House Museum Complex - Keosauqua

718 Dodge Street, Keosauqua

641.431.0581

This stone and brick house was built c. 1845. Local legacy endorses it as a station on the Underground Railroad. Few of these safe houses for runaway slaves remain. A trap door hiding place under the floor can still be viewed. Also featured is a one-room schoolhouse with original desks. The Log Cabin is a step back in time to 1800's pioneer living. Open Sundays, 1-4pm. (Memorial Day through mid-October) or by appointment.



Twombly Museum - Keosauqua

801 First Street, Keosauqua

641.226.7614

Voltaire Twombly was the first Iowan to receive the Congressional Medal of Honor. In 1875, he established a mercantile on the first floor and his home above in this landmark limestone building. Museum artifacts showcase the rich history of Van Buren County.



DID YOU KNOW?

The Honey War of 1839 was a territorial dispute that determined today's Iowa-Missouri border.

HISTORICAL SITES

Van Buren County Courthouse - Keosauqua

902 Fourth Street, Keosauqua

319.293.3129

This 1843 courthouse is listed on the National Register of Historic Places and is the oldest in continuous use in Iowa. It is the second oldest in the United States. In 1846, the courthouse was the scene of the first legal death sentencing and hanging in Iowa. Tours available Monday-Friday, 8am-4pm.



DID YOU KNOW?

*Born in tiny Pittsburg, IA, author Phil Stong wrote **State Fair**, a best selling 1932 novel that became a national sensation, adapted for both stage and screen.*

*But back home, it was a little **too** sensational, staying off the Keosauqua Library shelves for 25 years. Which probably only made folks **more** curious!*

Morris Park - Stockport

10938 Timber Road, Stockport

319.796.2253

In addition to camping, hiking and fishing, you can experience a piece of history in this quiet county park. The log cabin is furnished as it would have been in 1838 and the 1868 schoolhouse has era specific furnishings. The Big Barn is the highlight, with several pieces of antique farming equipment including a horse-drawn hearse, complete with a coffin. There is also a climate-controlled museum for historic textiles and other sensitive artifacts.



Peavine Line Museum - Stockport

104 N Main Street, Stockport

317.694.0407

Visit the museum, located in the original 1882 depot. Originally built in Longview, 2.5 miles NW of town, the depot was moved in 1890 on two flat cars to the current location at the 4-way stop in Stockport. Explore railroad memorabilia from the C.B. & Q. Railroad and the Peavine Line, which once ran between Fort Madison and Ottumwa. The line was originally a narrow gauge but converted to a standard gauge by 1890. The tracks in front of the depot, dating back to 1889, remain a lasting piece of history. Open during special events or by appointment.



Selma Log Cabin

Hwy 16 West, Selma

641.680.2601

Selma's log cabin was built in 1846. The cabin was moved to the park from its original site east of town and restored in 1969. It is owned by the Van Buren County Historical Society.



HISTORICAL SITES

American Gothic House & Center - Eldon

300 American Gothic Street, Eldon

641.652.3352

americangothichouse.org

See the facade that inspired an iconic piece of American art! The house Grant Wood sketched in 1930 can be viewed year-round from dawn to dusk. Adjacent visitor's center includes exhibit gallery, gift shop, film, and use of costumes with paid admission. Center is open Wednesday-Saturday, 10am-4pm; Sundays, 1-4pm. Ages 13-59, \$5; 60+ \$4. Viewing of house interior is limited. No costumes during scheduled events. Tour groups welcome.



Eldon Depot Museum - Eldon

405 KD Avenue, Eldon

660.349.9843

eldoniadepotmuseum.org

ALL ABOARD! Come check out our authentic caboose and flatcar and then blow the whistle on the locomotive! Tour the museum (original Rock Island Depot) to see telegraph equipment, tools, passenger train items, signals, pictures, articles and more. Housed in a separate "Rocket Room" building is a huge model railroad display and motorcar. Free to the public! Open Saturday and Sunday, 1-4pm (May through October) "Like" us on Facebook at Eldon Depot Museum and Eldon Iowa Model Railroad.



Indian Artifact Museum - Bentonsport

21929 Des Moines Street, Bentonsport

Explore a vast collection of Indian artifacts, including arrowheads, displayed in beautifully crafted inlaid wood cases. Open weekends or by chance.

Milton Heritage House

217 N Main Street, Milton Built in 1898 as a Presbyterian Church.

319.288.1162

Open during special events or by appointment.

Pioneer Museum

205 S 4th Street, Farmington

319.470.3374 / 319.878.3785

The second oldest First Congressional Church building west of the Mississippi, built in 1848. Open by appointment.

Mormon Trail

The Mormon Trail spans 1,300 miles from Nauvoo, Illinois to Salt Lake City, Utah. In 1846, Brigham Young's party entered Van Buren County, camping near Bonaparte. Some families settled in Bentonsport and labored in construction, contributing to its historic buildings. The pioneers followed the Dragoon Trail (roughly along Hwy 2) into Keosauqua, crossing the river at Ely's Ford in Lacey-Keosauqua State Park. At Richardson's Point (11251 Route J40, Milton) the journey's first deaths occurred, grave remain as a memorial. Today, visitors can explore these historic sites, tracing the path of early pioneers through Van Buren County's rich history.



LOCAL ORGANIZATIONS

Keosauqua Lions 641.799.7953

Keosauqua Lions are central to our community's spirit, leading the annual Fourth of July Celebration, and the heartwarming Festival of Trees for Christmas for Kids. Don't



miss their popular annual soup supper and auction! They also enhance major events like Memorial Day, Fly Van Buren, and Bike Van Buren with their food services. Support the Lions as they continue to enrich our community.

Bonaparte Public Library 602 8th Street, Suite 11 Bonaparte 319.592.3677 blibrary@netins.net



Located inside the historic former elementary school building, the Bonaparte Public Library is a welcoming space for book lovers of all ages! Offering a great selection of books, digital resources, and community programs, the library is a hub for learning and connection. Stop by to check out a book or join in on fun activities. Hours: Tuesday-Thursday, 1:30-6pm; Friday, 2:30-6pm; Saturday, 9am-Noon. Closed Sunday and Monday. Follow on our Facebook page for updates: [Facebook.com/bonlib.2020](https://www.facebook.com/bonlib.2020)

Des Moines River Valley of Serve Outdoors 319.288.0874

Serve Outdoors, established in 2008 in Van Buren County, offers people with disabilities, veterans, youth, and the elderly the chance to experience the great outdoors through hunting and fishing. Guided by local volunteers, participants utilize specialized equipment like handicapped blinds and boats. They are funded by donations, memorials, and an annual banquet/auction the third Saturday in January.



DID YOU KNOW?

The Des Moines River Valley Chapter of Serve Outdoors helps everyone enjoy the outdoors - because fresh air, fishing poles, and a little mud are good for the soul!

Engage Keosauqua engagekeo@gmail.com

Engage Keosauqua is a volunteer organization that supports the Keosauqua community with its mission to educate, inspire, and create. They host festivals, live music, and work with businesses, groups, and individuals to accomplish meaningful community growth that makes Keosauqua the premier southeast Iowa destination to live, work, and play. Check us out online at keosauqua.com!



THE VILLAGES

KEOSAUQUA

319.293.3536

keosauqua.com

Nestled on the banks of the Des Moines River's picturesque horseshoe bend lies Keosauqua, pronounced KEE-o-SAW-kwa. It is the largest village, with a population of 951, and serves as



the vibrant heart and county seat. Surrounded by lush woodland hillsides, this enchanting village offers a quaint downtown. Nature enthusiasts will find their haven in Lacey-Keosauqua State Park and Lake Sugema, renowned as Iowa's premier fishing lake. It is also a treasure trove of historical gems. The Pearson House Museum Complex, a confirmed safe house on the Underground Railroad, and the Van Buren County Courthouse, the oldest courthouse in continuous use west of the Mississippi and second oldest in the nation. Experience where small-town hospitality, history, and nature intertwine to captivate all who wander its way.



DID YOU KNOW?

John Fremont "Grandpa" McCullough, founder of the soft-serve dairy product known as Dairy Queen, was born May 1871 in Douds.

BENTONSPORT

bentonsporthertiage.org

Bentonsport National Historic District was once a thriving port of call on the Des Moines River with an estimated population of 650 people.

Today, there are about 40 residents, most of them living in the original 1840 structures. The picturesque village was named one of the 10 most beautiful towns in Iowa by Culturetrip.com. You'll discover a historic inn, rental cottages, antique and craft shops, resident artisans such as potters, blacksmith, woodworkers, sculptors and more. The old truss bridge is now a pedestrian bridge and the former mill site has been transformed into a beautiful Rose Garden along the riverfront.



BIRMINGHAM

319.498.4296

Birmingham (pop. 373) was laid out in 1839. The city park, located in the center of this charming Village, features a wonderful park shelter, a beautifully restored gazebo and



historic log cabin, originally built in 1923 by veterans of WWI and community volunteers to serve as an American Legion Post. This outdoor setting provides an excellent environment for weddings, receptions, family reunions, and community events.

THE VILLAGES

BONAPARTE

319.592.3400

bonaparte-iowa.com

Within this small village (pop. 361), situated along the banks of the Des Moines River, is the historic



Riverfront District which was named to the National Register of Historic Places in 1989. The Riverfront District is garnished with a butterfly garden, historic lock walls, a refurbished bandshell, and restored mills. Visitors enjoy the architecture, unique shops and the down-home friendly atmosphere. It has received recognition as one of 12 Distinctive Destinations in the nation, an acknowledgment given by the National Trust for Historic Preservation.

DOUDS / LEANDO

Douds and Leando are fondly referred to as Van Buren County's "Twin Cities".

Leando (south side of Des Moines River) was settled in the 1830s. Douds was

platted about 30 years later but never incorporated. From 1830 to 1990 there

was no buying or selling intoxicating liquor in Douds. The two towns saw

much rivalry until the river bridge was built in 1898. Today the two cities have joined and are regarded as one community,

Douds. Douds is home to the largest underground limestone mine in the state, which is operating today as Douds Stone, Inc.



FARMINGTON

319.878.3711

farmingtoniowa.com



Farmington (pop. 592), platted in 1839, is the oldest village of Van Buren County. It is home to the

annual Strawberry Festival held in June, beautiful Indian Lake Park,

the lush woods of Shimek State Forest, and the Pioneer Historical

Museum, a place you can get lost in the artifacts and stories of the past.

STOCKPORT

319.796.2135

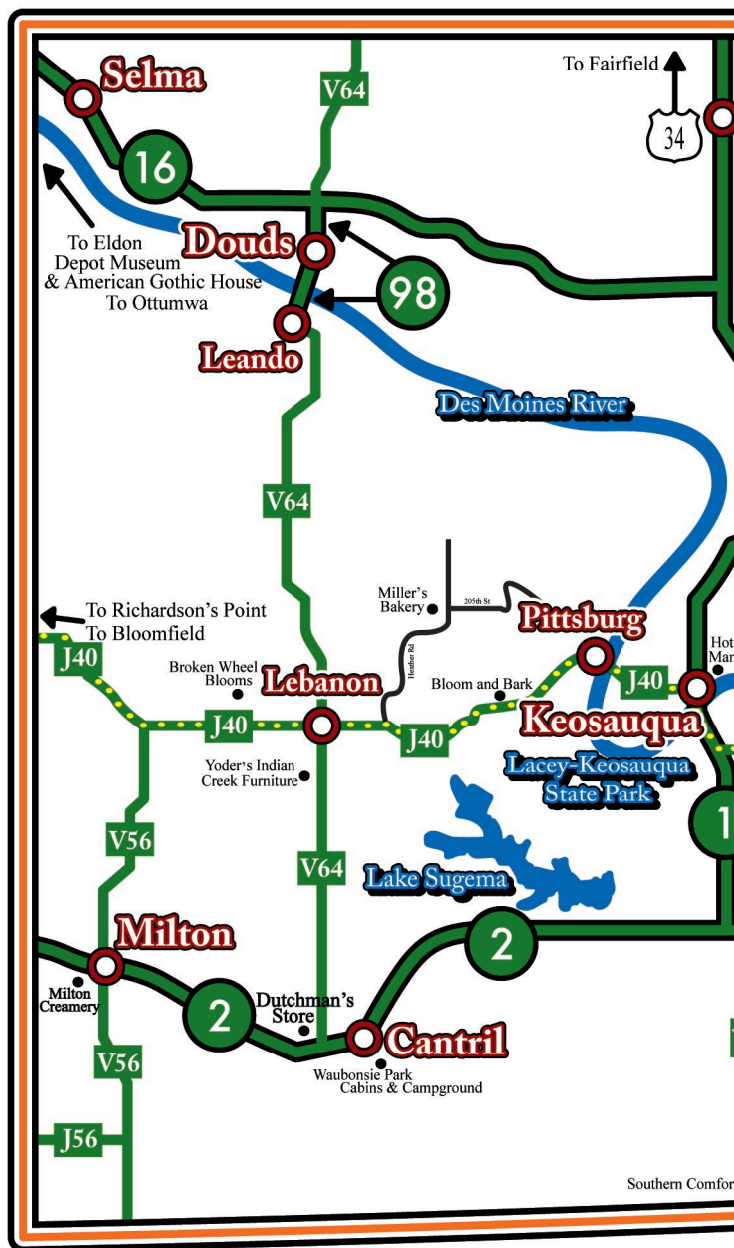
cityofstockport.com

it our youngest village. The railroad reached the settlement in 1882. Stockport's first school was organized in 1889. This village proudly shows its patriotism with an impressive "Avenue of Flags," display four times a year: Flag Day, Memorial Day, Independence Day, and Veterans Day. Stockport is also home to Morris Park and the county's Freedom Rock.

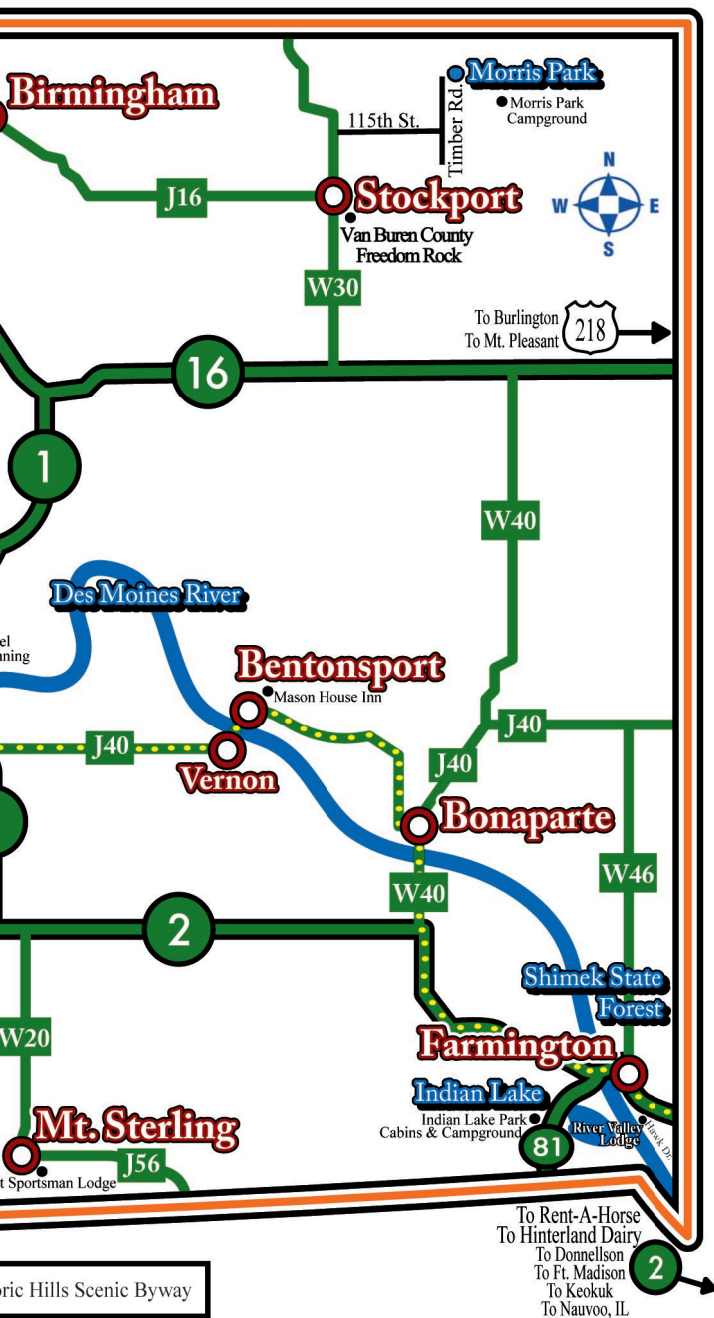
The area that was to become Stockport (pop. 274) was settled in the late 1800s but was not incorporated until 1902, making



Explore & Enjoy Van



Buren County, Iowa



THE VILLAGES

CANTRIL Cantril (pop. 226) was founded in 1872 and is currently the heart of the Amish & Mennonite communities and the beautiful 25-acre Waubonsie Trail Park, a nature lovers dream.
319.397.2295
cantrilia.com

MILTON Milton (pop. 380) was founded in 1844, platted in 1851 and incorporated in 1878.

LEBANON

This quaint community, just west of Keosauqua, at junction J40 and V64 is home to Old Order Amish families. Renowned for their craftsmanship in carpentry and woodworking, the area also boasts greenhouses, small engine repair, and fresh produce. Visit during regular hours, but note that Sundays are when the Amish observe a day of rest. Schools and homes adhere to a lifestyle without electricity or modern conveniences, offering a glimpse into a simpler way of life. Please respect their beliefs by not taking photographs.



MT. STERLING

Platted in 1853, is known by the nickname, Dog Town. It gained worldwide attention in 2003 when Mayor Jo Hamlett proposed a "No Lying Ordinance". A haven for outdoor enthusiasts, it has nearly 3,000 acres of public wetlands and hunting grounds and home to a diverse array of wildlife.

PITTSBURG

Phil Stong, famed author of "State Fair", was born here and his father operated the general store. The Pittsburg Cemetery is the burial site of Voltaire Twombly, the first Iowan to receive the Congressional Medal of Honor during the Civil War.

SELMA / IOWAVILLE

Where the echos of a fierce battle occurred when the Sac & Fox warriors clashed with the peaceful Iowans. Wander the lands once roamed by the legendary Chiefs Blackhawk and Keokuk, and visit the Iowaville cemetery, where ancient stones date back to the mid-1800s.



VERNON

This was one of the earliest towns of Van Buren County, laid out in 1837, directly across the river from Bentonsport. On June 29, 1837 a license was issued for a ferry to run between Bentonsport & Vernon. It operated seven days a week from daylight to dusk. In 1868, a second ferry was added, making this the only location on the Des Moines River with two operating ferries. The iron truss bridge was built in 1883 and served vehicular traffic until the bridge was closed in 1985 when the new bridge was constructed upriver. Vernon is home to the studio of the late renowned water-color artist, Wendell Mohr (photo).



THE VILLAGES

FORGOTTEN VILLAGES / GEOCACHING



Discover the Forgotten Villages of Van Buren County. Follow in the footsteps of Iowa's first pioneers as you explore these historic settlements, each marked with a commemorative plaque featuring historical facts. Hunt for all 36 geocaches that correspond with the Forgotten Villages! It's a fun and educational way to experience local history! Pick up a map/brochure at the Villages of Van Buren Welcome Center or at villagesofvanburen.com.



LODGING: Hotels/Motels

Hotel Manning

100 Van Buren Street, Keosauqua
319.293.3232

hotelmanning.com

A community-owned boutique hotel on the banks of the Des Moines River.

Visitors can step back in time and relax among the historic treasures

that distinguish the hotel, head outside to enjoy serene river views from the hotel's wrap-around porches, or unwind at the riverside courtyard or Sample Room Lounge. Enjoy one of the 14 antique furnished rooms (all with private baths) or stay in the Riverview Inn or Standard Motor Lodge.



Southern Comfort Sportsman Lodge

602 2nd Street, Mt. Sterling
641.680.1561

Tucked away just 10 miles south of Keosauqua, our quiet lodge is perfect for outdoor enthusiasts. Each of our units are tailored to suit your needs with a full kitchen, bath, TV, wifi, and two queen beds (linens provided). A fish cleaning station and fire pit available. 1,500 acres of public hunting with many lakes makes our lodge perfect for the great outdoorsman! Pets welcome for a \$20 fee.



Cobblestone Inn & Suites

4901 Avenue O, Fort Madison
319.246.1401

staycobblestone.com/ia/fortmadison

Comfort and convenience are just a short drive from the Villages. Step into our

welcoming lobby, adorned with a cozy rock fireplace, local artwork, and inviting seating. Our attentive staff is on hand to ensure a delightful stay, offering amenities like a complimentary breakfast, in-room microwave and refrigerator, an onsite exercise facility, and business center. Providing free high speed internet and pet friendly. Big city quality with small town values!



LODGING: Cabins

A-Frame Lacey Trail 23634 Lacey Trail, Keosauqua 515.290.5179 keocabins.com

Remote cabin on 11.5 acres bordering Lacey-Keosauqua State Park with Lake Sugema located just 1/2 mile south. The cabin comes fully furnished with a full kitchen, appliances, utensils, AC, linens, grill, 1.5 baths, broadband internet, large flat-screen TV, and 3 bedrooms. Unwind outdoors next to the front yard fire pit, small frog pond, and fully stocked 1.5 acre fishing pond with fire pit. Sleeps six max. \$179 (3-person fee minimum), \$59 per additional guest.



Indian Lake Park Cabins 28163 Willow Avenue, Farmington 319.878.3706 farmingtoniowa.com

Try one of our rustic wood-framed cabins that sleep four, renovated metal rail-car cabins that sleep four, or wooden open floor plan cabins that sleep 8-10. All cabins have heat/AC, private bathroom, and full kitchenette. Bring your own bedding and towels. Pet friendly. Check-in 2:00pm/Check-out 11:00am.



Pine Ridge Retreat & Lodging 24120 Lacey Trail, Keosauqua 641.919.7829 (text or call) pineridgeretreat.com

Unwind at our cabin retreat with family, friends, or a solo getaway! Choose from fully furnished modern cabins - three large and six family-sized - each with stocked kitchens, private baths, and budget-friendly options. Enjoy electric plugins for boats and some full hookups for campers. A private 2-acre pond for fishing and paddleboating. Situated between Lacey-Keosauqua State Park and Lake Sugema with access to nature trails, fishing, boating, hunting, and exploring the Villages of Van Buren. Pet-friendly and open year-round! Book online or visit us on Facebook.



Riverside Cabins 903 Front Street, Keosauqua 319.293.3232 hotelmanning.com

Three fully furnished modern cabins. Each cabin includes kitchen utensils, linens, central heating/air, and covered porch overlooking the Des Moines River. Located near the boat dock, picnic shelter, city park and adjacent to the historic Hotel Manning. Open year round.



DID YOU KNOW?

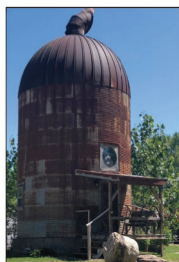
The Hotel Manning's stone foundation was built in 1839 as a one-story building until a fire destroyed it in the 1890s and two more stories were added to create the hotel.

LODGING: Cabins

River Valley Lodge Cabins

29080 Hawk Drive, Farmington
319.878.3888 / 319.878.4208
rivervalleyhorsecamp.com

Enjoy the ultimate camping experience in one of our 12 primitive character cabins or two cowboy suites, each with unique themed decor. All cabins have A/C; most have mini-fridges and microwaves. Cowboy suites include kitchenette and bath. Heated and A/C showerhouse/restroom is a short walk from cabins. You bring your linens and supplies. Pet friendly.



No two cabins at River Valley Horsecamp are alike, so if you get lost finding yours, just say you're taking the scenic route!

Waubonsie Park Cabins

601 W. North Street, Cantril
319.397.2193
cantrilia.com

This quaint cabin, located in the Waubonsie Park campground is ADA accessible and sleeps up to 6 people with one queen bed and two full size futons. Full kitchen, dining area, and full bath/shower. The only thing you need to bring are your clothes, personal items, and food! Free wifi.



LODGING: Vacation Rentals

Acorns to Oaks Retreat

18807 Route J40, Keosauqua
319.551.4073
airbnb.com/rooms/1150804324699016592
vrbo.com/3638191

Peaceful, spacious 4-bedroom home near Lacey-Keosauqua State Park and just minutes from Keosauqua is waiting for you. Recently renovated, it boasts a large living room, full kitchen, dining room, sun porch, 1.5 baths, wifi, smart TV, and basement hangout for your entertainment! Step outside to enjoy a large yard surrounded by trees, complete with gazebo, picnic table, fire ring, and lovely pond. Immerse yourself in nature while experiencing all the comforts of home in this idyllic retreat!



Alexander's Cottage

21930 Wall Street, Bentonsport
319.592.3152 / 515.975.4179
alexandersbentonsportcottage.com

Relax in historic Bentonsport near the Des Moines River, listen to the birds sing, watch the deer dine on our hostas and enjoy a campfire. The renovated 1840's cottage sits near the defunct Rock Island line, has a screened porch, deck, 2 bedrooms, 1 1/2 baths, kitchen, living room & dining area. The cottage is fully equipped and includes smart TV, DVD, wifi, washer and dryer. It is furnished with antiques and country charm. Email: alexande@netins.net



LOGGING: Vacation Rentals

Cedar Valley Winery Lodge
2034 Dewberry Avenue, Batavia
641.662.2800
cedarvalleywine.com

Call it a hunting lodge, a cottage, a getaway, or whatever you want! This newly renovated escape, nestled in the heart of Cedar Valley Winery's tranquil countryside with its panoramic views, is the home away from home your heart has been dreaming of. Experience the perfect blend of comfort and convenience with free wifi, large screen TV, spacious bathroom, modern large farm-style kitchen, and all the amenities you need. From hunting to honeymoon, this magical sanctuary, centrally located in southeast Iowa's thriving tourist destination, is waiting to entertain!



Countryside Retreat
2270 256th Street, Fairfield
641.919.8838
evolve.com/vacation-rentals/us/ia/fairfield/496702

Immerse yourself in the ultimate experience at this stunning 5-bedroom, 4-bath vacation rental. Custom-built luxury and ample space for large families or groups. This gated property is your gateway to relaxation and privacy. Create homemade meals on the patio, listen to the waterfall, or embark on a deer hunting adventure nearby. Just 10 minutes from the Villages, your adventure awaits!



Lake Shore Hideout
24418 Lacey Trail, Keosauqua
641.820.1719
lakeshorehideout.com

Come enjoy your next adventure in paradise with the best views of Lake Sugema out your front door! Perfect for hunters, fishermen, and families coming to enjoy the Villages! We offer all the amenities of your home with a full living and kitchen area, two bedrooms, a bathroom, patio/deck, free wifi, and satellite TV. Daily and weekly rentals available. Open year round! Credit cards are accepted. Wander our way for your next adventure in the Villages of Van Buren County!



Riverview Cottage
1208 First Street, Keosauqua
641.919.0758
airbnb.com/h/riverviewcottagekeosauqua

This inviting cottage overlooking the Des Moines River offers the perfect getaway for a hunting retreat or girl's weekend. Built in 1870 and thoughtfully restored in 2024, it offers a modern kitchen with oversized island, spacious living room, and two cozy bedrooms with custom made barn doors. 5 guest maximum. Walking distance to the city park, shops, and restaurants. Enjoy exploring the Villages of Van Buren!



LODGING: Vacation Rentals

Riverview Hideaways Airbnb

Three Keosauqua Locations

641.919.4323

sites.google.com/view/riverview-hideaways/home



These unique homes, coupled with the serene setting and the charm of the Villages, create a retreat for guests looking to unwind from the hustle and bustle of life. The river adds an extra layer of tranquility and opportunities for outdoor activities. Explore the beautiful natural surroundings, go fishing, take a leisurely stroll along the riverbank or simply relax and enjoy the views. Use the website to book your stay with us and choose between three beautiful and relaxing options!

The Roost, The Henhouse, or The Nest! Follow us on Facebook @RiverviewHideaways-ThreeGreatPlaces

LODGING: Bed & Breakfasts

Mason House Inn Bed & Breakfast

21982 Hawk Drive, Bentonsport

319.592.3133

themasonhouseinn.com

Experience a unique blend of history and comfort. Established in 1846, this charming B&B offers nine private rooms and a quaint caboose cottage, all with private bathrooms. Enjoy a complimentary breakfast, free wifi, and an EV charging station. Perfect for reunions, retreats, and getaways. Immerse yourself in its rich past as a riverboat stop, Civil War hospital, and Underground Railroad refuge. Book your memorable stay with us!



DID YOU KNOW?

*The Mason House Inn has hosted riverboat captains, Civil War soldiers, and maybe even a ghost or two... don't worry, they're friendly and **rarely** steal the covers!*

CAMPGROUNDS

Austin Park Campground

19178 Eagle Drive, Keosauqua

319.293.3589

vbcountyconservation.com

Located two miles northeast of Pittsburg along the Des Moines River, this rustic campground has 13 non-reservable sites with electricity, a shelter house, and boat and kayak launch. Porta potties at park entrance and hydrants for water.



Bentonsport Campground & Park

22098 Hawk Drive

319.293.3589

vbcountyconservation.com

This peaceful setting has 23 modern sites with gravel camp pads, picnic tables, fire rings, and 30-50 amp electricity and water hydrants throughout. Pit toilet, shower house, shelter, and dump station. Reserve your spot online.



CAMPGROUNDS

Douds County Park Campground

Just off 14367 Walnut Street, Douds

319.293.3589

vbcountyconservation.com

Along the Des Moines River, there are two camp sites with 30-50 amp hookups, a shelter house, and boat ramp.



Indian Lake Park Campground

28163 Willow Avenue, Farmington

319.878.3706

farmingtoniowa.com

Come enjoy our beautiful 177-acre nature retreat with a 44-acre no wake

lake for fishing, boating, and swimming. Hike a 2 mile trail surrounding the lake or take a stroll through Birdwatch Walk. We offer tent camping, RV camping with full hook-ups, water/electric, or electric only. We also offer public shower house/bathrooms, stone lodge, open shelters, and playground equipment.



Lacey-Keosauqua State Park

22895 Lacey Trail, Keosauqua

319.293.3502

Reservations:

iowastateparks.reserveamerica.com

This renovated campground area has 65 sites; 51 electric (13 with full service), 13 non-electric & one youth group site. Come enjoy one of Iowa's largest parks with 1,653 acres! Two picnic shelters are available for rent. 13 miles of hiking trails. Lacey Lake (30 acres, no wake) has a boat ramp and excellent fishing. The swimming area is always popular during the summer months. Reservations and current pricing for camping, cabin, lodge, and shelter rentals are on the website.



DID YOU KNOW?

Lacey-Keosauqua State Park is Iowa's second state park, dedicated in 1920. The stone structures built by the Civilian Conservation Corps (CCC) in the 1930s still stand strong, echoing the simpler days of picnics, Sunday drives, and family hikes that turned into lifelong memories.

Lake Sugema Recreation Area

19640 Jersey Avenue, South of Keosauqua

319.293.3532

vbcountyconservation.com

Enter this beautiful 574-acre, no-wake lake area from Hwy 2. Campgrounds include 22 reservable sites on concrete pads, 12 full service, 10 modern, and seven non-reservable gravel pads with electric. Amenities include shelter house, shower house, playground, dump station, boat ramps, fish cleaning station, and parking areas with electric outlets. The lake is known for its largemouth bass, bluegill, black crappie and channel catfish. Roughly 3,600 acres for public hunting, hiking, bird watching, and other activities to enjoy in the great outdoors!



CAMPGROUNDS

Morris Park

10938 Timber Road, Stockport

319.796.2148

vbcountyconservation.com

Located northeast of Stockport on a quiet, 60-acre park. Featuring seven buildings containing artifacts from the county's farming past. Visitors may view a glass sided horse-drawn hearse, a Utica huckster wagon, a rare hay stacker and more. A one-acre pond is stocked with bluegill, bass and channel catfish. Enjoy the nature trails, picnic, and playground area. 15 camping sites, 30-50 amp electricity, new shower house, dump station, and picnic shelter.



River Valley Lodge, Campground & Horse Camp

29080 Hawk Drive, Farmington

319.878.3888 / 319.878.4208

rivervalleyhorsecamp.com

2025 Rates: \$40 water/electric includes 12'x12' stall (additional stalls \$15) Weekday rates: \$30/\$10. Primitive camping: \$15. Bunkhouse sleeps 6: \$120; Cabins sleep 2-6: \$60-\$150; Cowboy Suites sleep 2-4: \$150. A western themed campground within one mile of Farmington on paved road. A/C and heated shower house, laundry, shelters, playground, wifi, bunkhouse and cabins. Fifty campsites with water/electricity. Fishing pond on site. Primitive camping along Des Moines River. Equestrian facilities include 94 covered stalls, arenas, round pens, on-site extreme course and trail to adjacent Shimek State Forest. Lodge rental for group parties, weddings, reunions, etc. Pets welcome.



Shimek State Forest

319.878.3811

iowastateparks.reserveamerica.com

One of the largest continuous areas of timber in the state with 9,000 acres. Four large ponds, stocked with largemouth bass, catfish and other pan fish. Electric trolling motors are allowed. Public hunting, cross country skiing and snowmobile trails. Equestrian trails and camping facilities are available at the Lick Creek unit. Picnic tables, cook sites and primitive camping sites are throughout the forest.



Waubonsie Park

601 W North Street, Cantril

319.397.2193

cantrilia.com

The 23-acre Waubonsie Trail Park on the northwest edge of Cantril features 12 campsites (some with 50 amp hookups), rustic camping cabin (sleeps four), and an ADA Cabin (sleeps six). Handicapped accessible showers, sewer dump station, two picnic shelters, large playground, 1+ mile hiking trails, three covered bridges, a pond, 9-hole Disc Golf Course, horseshoe pits, bird watching station, tall grass prairie and wildflower areas. Storm shelter. Free wifi.



DID YOU KNOW?

Forget gridlock - in the Villages of Van Buren, "rush hour" means a tractor up ahead, a buggy behind, and a deer deciding **now** is the perfect time to cross!

BUSINESS & SERVICES

BANQUET & MEETING FACILITIES

Fair View Barn

20493 Hwy 1 North, **Keosauqua**
641.680.0026

vanburencountyfairia.com
thefairviewbarn.com

This big red barn features a large ballroom/meeting room, seating up to 320. Full kitchen, tables, and chairs available. A charming and rustic venue for weddings, receptions, graduations, retirement parties, and many more special events. The barn is available year round. Located on the Van Buren County Fairgrounds. Follow us on Facebook @thefairviewbarn.



River Valley Lodge

29080 Hawk Drive, **Farmington**
319.878.3888 / 319.878.4208
rivervalleyhorsecamp.com

Fully decorated western themed multi-purpose facility featuring prep kitchen, stainless steel serving area, stage, attached open air shelter and a grand rustic 75 foot front porch. Seats up to 200. This unique venue is an idyllic setting for weddings, receptions, reunions, showers, family and holiday gatherings, and more!



Roberts Memorial Center

20497 Hwy 1 North, **Keosauqua**
319.293.3151

A multi-purpose center featuring a large stage, sound system, wifi, full kitchen, tables and chairs to seat up to 400, and ample parking. A perfect venue for weddings, receptions, reunions, community dinners, and numerous other special events.



The Stone House - A Village Meeting Place

26985 Route J40, **Bentonsport**
319.592.3222

bentonsporthheritage.org

The historic 1850 building is now a modern, handicap accessible all-season facility. Seats up to 80. Full kitchen and restrooms. Available for year-round rental.



AGRICULTURE BUSINESSES

FCA VisionAg LLC

110 S Keokuk Washington Road, **Keota**
641.636.3748

keotafarmerscoop.com

A trusted, farmer-owned cooperative committed to supporting local producers with innovative agronomy, grain, feed, and energy services. A focus on strong relationships, expert guidance, and cutting-edge technology, helping growers maximize productivity and sustainability. Proudly serving the agricultural community with integrity and dedication to future growth.

FCA
VISIONAG LLC

BUSINESS & SERVICES

AGRICULTURE BUSINESSES

Anderson Ranch Miniature Highlands

Farmington

319.470.4456

andersonranchminihighlands.com

We bring the charm of mini highland cattle to you! Perfect for fairs, festivals, schools, senior centers, birthdays, and more, their mobile petting experience lets guests safely meet, pet, and feed these gentle, fuzzy favorites. They also offer photo sessions with the herd (by appointment), plus fun merchandise like keychains and instant prints. Whether it's education, entertainment, or unforgettable memories, our lovable minis make any event a little more special!



COMMUNITY SERVICES

DVIP (Domestic Violence Intervention Program)

800.373.1043 (24 Hour Hotline)

dvipiowa.org

Support and advocacy for those experiencing domestic violence, dating abuse, stalking, and human trafficking. Free, confidential services include safety planning, legal and medical advocacy, and resource assistance. Advocates available 24/7.



CONVENIENCE STORES



Jet Stop

121 Hwy 1, Birmingham

319.498.4663

202 Washington St., Bonaparte

319.592.3281

109 E Hwy 2, Milton

641.656.4215

jetstops.com

Convenience stores with gas, hot fresh pizza, pop, food, beer, ice, and more! Open 365 days a year. ATM at all locations.

FINANCIAL & INSURANCE SERVICES

Pilot Grove Savings Bank

20390 Hwy 1, Bonaparte

1341 Pilot Grove Road, Pilot Grove

319.592.3470 / 888.283.2265

pilotgrovesavingsbank.com



Proudly serving Southeast Iowa since 1911, with a legacy rooted in service and community growth. What began in a modest building in Pilot Grove has grown into a trusted financial institution with over \$1 billion in assets, 125+ dedicated employees, and 13 convenient branch locations - including the newest in Bonaparte! Remaining steadfast in their mission to provide exceptional service and support to individuals, families, and businesses alike, the new Bonaparte branch reflects a continued investment in small-town Iowa and a commitment to strengthening the communities they serve. Whether you're opening your first account, planning for the future, or expanding your business, you'll find a trusted partner. Rooted in tradition, driven by progress.

Pilot Grove
Savings Bank

Equal Housing Lender

Member FDIC

BUSINESS & SERVICES

FINANCIAL & INSURANCE SERVICES

Farm Bureau Financial Services

713 1st Street, **Keosauqua**

319.293.7101 (Main Office)

P. Alex Kessel, CFR, MSFS, AEP, ChFC, CLU.

Associate Manager, Agent, Financial

Advisor. We simplify insurance so you can

feel confident knowing your family, home, cars, and other

property are protected. Other offices located at:

106 Olive Street, Farmington **319.878.3737**

304 S 20th Street, Fairfield **641.472.2128**

424 Main Street, Donnellson **319.835.5126**

301 W 2nd Street, Suite 7, Ottumwa **641.575.2601**



First Iowa State Bank

714 First Street, **Keosauqua**

102 Division Street, **Cantril**

319.293.3794

1st
iowa.bank

Employee-owned
bank with offices in
Keosauqua, Cantril,
Bloomfield, Albia,

and Eddyville. Dedicated part of our community since 1931.
MEMBER FDIC

Fortress Insurance Services

707 1st Street, **Keosauqua**

319.293.3752

thefortress.net

We provide clients a one-on-one focus
approach working with you every step of
the way to ensure our products are meeting
your needs. Contact us today for a consultation.



**Fortress
Insurance Services**

Libertyville Savings Bank

20390 Hwy 1, **Keosauqua**

14155 Hwy 98, **Douds**

641.472.9839

lsbia.bank



Family
Owned &
Operated



Family owned and operated, and your
trusted source for innovative financial and
insurance solutions. Visit our website and follow us on Facebook to
learn more about our Des Moines Register Top Work Place!

State Central Bank

612 1st Street, **Bonaparte** **319.592.3372**

101 S 2nd Street, **Farmington** **319.878.3320**

116 S Main Street, **Stockport** **319.796.4660**

514 Main Street, **Keokuk** **319.313.8091**

statecentralbank.com



**State Central
Bank**

You can count on us to be safe, strong, and secure while helping
you organize your finances. We offer deposit and savings products,
a full array of loan options, and trust services. You will appreciate
the convenience of our online banking and bill pay, credit cards,
and debit cards. We are committed to the communities we proudly
serve. A bank where families have enjoyed financial services for
generations. MEMBER FDIC

DID YOU KNOW?

*Infamous outlaw Jesse James is rumored to have
passed through Van Buren County on the run,
though no one's sure if he left behind any loot!*

BUSINESS & SERVICES

HEALTHCARE

Wells Hometown Drug

1547 Broad Street, **Keosauqua**

319.293.7757

wellshometowndrug.com

We take great pride in the high-level care and convenience we provide our community. Current customers can easily request prescription refills online and new customers can contact us for quick on-site prescription fills. We look forward to serving you! Open Monday-Friday, 8am-5:30pm; Saturday, 8:30am-12:30pm. Closed Sunday.



Van Buren County Hospital & Clinics

304 Franklin Street, **Keosauqua**

319.293.3171 / 800.873.8224

vbch.org

emergency care, lab, and radiology services. Affordable health care provided in four health clinics throughout the county.

Affiliated with
MercyOne. Providing
around the clock

HOME & CONSTRUCTION

Douds Lumber and Home Center

14792 Washington Street, **Douds**

641.936.7115

doudslumber.com

A full-service supplier of lumber, building materials, hardware and tools, as well as fencing supplies, hydraulic hoses, Key clothing and more! We'll work with you on every phase of your project from design to completion. Located south of Van Buren County Community Elementary School, on the Leando side of the river. Open Monday-Friday, 7am-5pm; Saturday, 7am-Noon. After hours design consultations are available by appointment.



Keosauqua Lumber Co.

21561 205th Street, **Keosauqua**

319.293.3366

Your hometown source for quality building materials and expert service! Whether you're tackling a DIY project or a major construction job, we have everything you need - lumber, siding, windows, doors, cabinets, sheds, fencing and more! Conveniently located north of Keosauqua off Hwy 1, near the fairgrounds. Open Monday-Saturday, 8am-5pm. Stop by or call us today!



MEMORIAL SERVICES

Cranston Family Funeral Home

1517 Broad Street, **Keosauqua**

319.293.3531

cranstonfamilyfuneralhome.com

We are dedicated to serving families that allow us to help them through this difficult time. Providing funeral service, monument sales, preplanning, and our own onsite crematory. Whether you've lost a loved one, are planning your own end-of-life care, or are continuing on your grief journey, we are here for you.



BUSINESS & SERVICES

SERVICE STATIONS

Osborne Oil

303 Main Street, Keosauqua

319.293.3155

osborneoilcompany.com

Osborne Oil is a multi-service business from general vehicle maintenance to tires and towing. We have a great selection of used cars and trucks close to home. Offering 24/7 pay at the pump for your convenience with BP quality gas and diesel fuel. Now offering U-Haul rentals. We do it all! Open 7am-6pm, Monday-Saturday. Closed Sunday.



DID YOU KNOW?

The 8th site in Iowa to have a press was Keosauqua (ahead of Ottumwa, Fairfield, & Keokuk) when two men set up the Iowa Democrat & Des Moines River Intelligencer in 1843.

UTILITY PROVIDERS

Van Buren Telephone Co.

617 First Street, Keosauqua

319.293.3187

vbtelco.com

Independent telecommunications service provider serving the Villages since 1923.

Offering an array of services including



local and long distance telephone service, calling features, and broadband internet service.

WHERE TECHNOLOGY MEETS TRADITION.



Keosauqua Light & Power

319.293.3406

Serving the electrical needs of Keosauqua since 1950. We take care of our customers with top-notch service 24/7, 365 days a year!



KEOSAUQUA LIGHT & POWER REVOLVING LOAN FUND

This fund is a dynamic financial resource to fuel growth and progress in the Villages of Van Buren County. With low-interest loans, we support projects that boost community prosperity. Together, we can build a thriving, vibrant community that stands as a beacon of growth and development in the Villages.

For detailed guidelines, eligibility criteria, and application go to villagesofvanburen.com/live/economic_development

Turn your vision into reality in the Villages of Van Buren!

Southern Iowa Electric Cooperative



Southern Iowa
Electric Cooperative

A Touchstone Energy® Cooperative

641.664.2277
sie.coop

We are a member-owned distribution cooperative serving approximately 4,800 homes, farms,

businesses, and industry in southern Iowa. SIEC is a Touchstone Energy Cooperative.

2025 SPECIAL EVENTS

MAY 23

VILLAGES FOLK SCHOOL FIVE O'CLOCK FRIDAY BBQ

MAY 24-25

BENTONSPORT FLEA MARKET & CRAFT SHOW

MAY 25

ROLLIN' ON THE RIVER MUSIC FESTIVAL

JUNE 6-8

BIRMINGHAM HOMECOMING

JUNE 7

FLY VAN BUREN

JUNE 13-15

FARMINGTON STRAWBERRY FESTIVAL

JUNE 14

PEARSON HOUSE HERITAGE DAY

JUNE 20-22

DOUDS FIELD DAY

JUNE 21

BENTONSPORT HERITAGE DAY

JUNE 28

BONAPARTE INDEPENDENCE DAY CELEBRATION

JULY 4

KEOSAUQUA INDEPENDENCE DAY CELEBRATION

JULY 15-21

VAN BUREN COUNTY FAIR

AUGUST 9

J40 FARM CRAWL

AUGUST 16-17

BIKE VAN BUREN XXXIX

AUGUST 29-30

STOCKPORT LIONS BBQ DAYS

AUGUST 29-SEPTEMBER 1

FARMINGTON BLUEGRASS WEEKEND FESTIVAL & JAM

OCTOBER 4-5

SOUTHEAST IOWA DEPOT TOUR

OCTOBER 10-12

SCENIC DRIVE FESTIVAL

NOVEMBER 7

VILLAGES FOLK SCHOOL BOTTOMLESS SOUP SUPPER

NOVEMBER 28-DECEMBER 31

CHRISTMAS IN THE VILLAGES

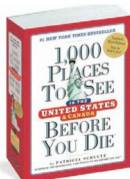
DECEMBER 5-7

FESTIVAL OF TREES

FOR A COMPLETE LISTING OF ALL CURRENT EVENTS
VISIT VILLAGESOFVANBUREN.COM/EVENTS

BUSINESS INDEX

A-Frame Lacey Trail.....21	Forgotten Villages/ Geocaching.....20	Pine Ridge Retreat.....21
Acorns to Oaks Retreat.....22	Fortress Insurance Services.29	Pilot Grove Savings Bank...28
Addie May Fudge.....2	Great Day Cafe.....7	Pioneer Museum.....13
A.J.'s Saloon.....8	Greef General Store.....2	Pittsburg, Village of.....19
Alexander's Cottage.....22	Gypsy and Gems.....3	Rent-A-Horse.....8
American Gothic House & Center.....13	Hinterland Dairy.....5	River Valley Lodge.....27
Anderson Ranch Minis.....28	Holly's Flippin Out.....4	River Valley Campground & Horse Camp.....26
Aunty Green Hotel Museum.....10	Holmes Leather Crafting.....3	River Valley Cabins.....22
Austin Park.....24	Hotel Manning.....20	Riverbend Pizza & Steakhouse.....7
Bentonsport Campground & Park.....24	Ice Cream & Take Out.....6	Riverfront Flowers.....4
Bentonsport National Historic District.....15	Indian Artifact Museum.....13	Riverside Cabins.....21
Bentonsport Historic Presbyterian Church.....10	Indian Lake Park Cabins....21	Riverview Cottage.....23
Birmingham, City of.....15	Indian Lake Campground.25	Riverview Hideaways.....24
Bloom and Bark.....8	Iron & Lace.....3	Roberts Memorial Center...27
Bonaparte, City of.....16	Jeanette's Floral & Decor...5	Selma Log Cabin.....12
Bonaparte Library.....14	Jet Stop.....28	Selma/Iowaville, Village of..19
Bonaparte Retreat.....6	Keosauqua, City of.....15	Shimek State Forest.....26
Bridge Café & Supper Club...6	Keosauqua Light & Power..31	Simply Irresistible.....3
Broken Wheel Blooms.....5	KLP-Revolving Loan Fund..31	Southern IA Electric Coop...31
Cantril, City of.....19	Keosauqua Lions.....14	Southern Comfort Sportsman Lodge.....20
Cedar Valley Lodge.....23	Keosauqua Lumber.....30	State Central Bank.....29
Cobblestone Inn & Suites....20	Lacey-Keo State Park.....25	Stockport, City of.....16
Conservation Areas.....9-10	Lake Shore Hideout.....23	Sweet Maple Mercantile.....3
Countryside Retreat.....23	Lake Sugema.....25	The Lilac Antiques.....4
Cranston Family Funeral.....30	Lebanon, Village of.....19	The Stone House.....27
DM River Valley of Serve Outdoors.....14	Libertyville Savings Bank...29	Trails.....9
Douds County Park.....25	Lunch Box Café.....6	Twombly Museum.....11
Douds Depot.....10	Mason House Inn B&B....24	Valley School No. 3.....11
Douds/Leando, Village of...16	Miller's Bakery.....5	Van Buren Co Courthouse..12
Douds Lumber & Home Center.....30	Milton, City of.....19	Van Buren Co Hospital & Clinics.....30
Dutchman's Store.....2	Milton Creamery.....2	Van Buren Telephone Co....31
DVIP.....28	Milton Heritage House....13	Vernon, Village of.....19
Eldon Depot Museum.....13	Misty's Malt Shop.....7	Vets Club Bar & Grill.....7
Engage Keosauqua.....14	Mormon Trail.....13	Villages Folk School.....9
Fair View Barn.....27	Morris Park.....12	Villages Orb Project.....8
Farm Bureau Financial Services.....29	Morris Park Campground.26	Waubonsie Park Cabins....22
Farmington, City of.....16	Mt. Moriah Church.....11	Waubonsie Park Campground.....26
FCA Vision Ag.....27	Mt. Sterling, Village of.....19	Wells Hometown Drug.....30
First Iowa State Bank.....29	Naturalist Program.....10	Yoder's Indian Creek Furniture.....4
	Oak Grove Community.....11	
	Osborne Oil.....31	
	Pearson House Museum.....11	
	Peavine Line Museum.....12	



OUR NEIGHBORS

Eldon - Pop. 771

641.652.3352

americangothichouse.org

25 minutes NW of Keosauqua on Hwy 16.

Home to the iconic American Gothic House, Grant Wood's famous painting and Eldon Depot Museum (original Rock Island Depot).



Bloomfield - Pop. 2,831

641.664.1104

visitdaviscounty.com

30 minutes west of Keosauqua on the Historic Hills Scenic Byway (Route J40). Abundant shopping opportunities and historic courthouse.



Ottumwa - Pop. 25,116

641.684.4303

meetottumwa.org

50 minutes NW of Keosauqua. You'll find shopping opportunities, large water park, several hotels and restaurants. The Pro Balloon Races are held annually in August.

Fairfield - Pop. 9,200

641.472.2828

visitfairfield.com

25 minutes north of Keosauqua on Hwy 1. A unique community with diverse culture and the most eclectic dining scene in SE Iowa. Wide variety of festivals and shopping opportunities.



Mt. Pleasant - Pop. 8,131

319.385.3101

mountpleasantiowa.org

45 minutes NE of Keosauqua. Midwest Old Threshers Reunion runs for 5 days ending on Labor Day and draws thousands of visitors every year.

Burlington - Pop. 23,320

319.752.6365

greaterburlington.com

60 minutes east of Keosauqua. Located on the Mississippi River with charming downtown shopping, casino, water park and home to Ripley's Believe It or Not, "Crookedest Street in the World"...Snake Alley.



Ft. Madison - Pop. 9,872

319.371.4682

visitfortmadison.com

50 minutes east of Keosauqua on Hwy 2. Home to the first US military fort on the upper Mississippi River - reconstructed and open to visitors. Also boasts the world's longest swing-span double-decker bridge and hosts the renowned Tri-State Rodeo, one of the Midwest's premier rodeo events.



Keokuk - Pop. 9,265

319.524.5599

keokukiowatourism.org

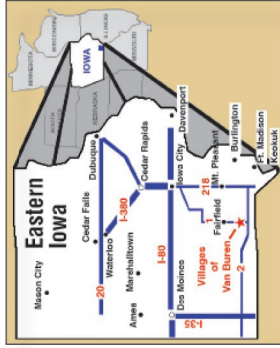
60 minutes SE of Keosauqua. Keokuk is home to the best Geode hunting in Iowa! Bald Eagle Appreciation Days is held annually on the third weekend in January.





809 First Street, PO Box 9
Keosauqua, IA 52565

RETURN SERVICE REQUESTED



CONTACT US:

800.868.7822 / 319.293.7111

info@villagesofvanburen.com

villagesofvanburen.com